



NC DEPARTMENT OF TRANSPORTATION
 DIVISION OF HIGHWAYS
 STRUCTURE MANAGEMENT UNIT

ATTENTION: **IMPACT DAMAGE: SPAN 1, BEAMS 1, 4, AND 5 - PROMPT ACTION REQUESTED**

Structure Safety Report

Supplemental Element Inspection

INSPECTION DATE: 04/19/2022

DIVISION: 8 COUNTY: CHATHAM STRUCTURE NUMBER: 180022 FREQUENCY: None

FACILITY CARRIED: SR2135 MILE POST: _____

LOCATION: 0.5 MI. E. JCT. SR2333

FEATURE INTERSECTED: US421

LATITUDE: 35° 35' 48.31" LONGITUDE: 79° 19' 2.18"

SUPERSTRUCTURE: REINFORCED CONCRETE DECK ON STEEL PLATE GIRDERS (CONTINUOUS)

SUBSTRUCTURE: END BTS:RC CAP & STEEL PILES,INTBT:RC POST & BEAM,PILE FTGS.

SPANS: 2 SPANS. SEE SPAN PROFILE SHEET FOR SPAN DETAILS

FRACTURE CRITICAL TEMPORARY SHORING SCOUR CRITICAL SCOUR PLAN OF ACTION

GRADES: (Inspector/NBI Coding) DECK 5/5 SUPERSTRUCTURE 5/5 SUBSTRUCTURE 5/5 CULVERT N/N

POSTED SV: Not Posted POSTED TTST: Not Posted

OTHER SIGNS PRESENT: NONE



Sign noticed issued for	Number Required
<u>NO</u> WEIGHT LIMIT	<u>0</u>
<u>NO</u> DELINEATORS	<u>0</u>
<u>NO</u> NARROW BRIDGE	<u>0</u>
<u>NO</u> ONE LANE BRIDGE	<u>0</u>
<u>NO</u> LOW CLEARANCE	<u>0</u>

DIRECTION OF INSPECTION W-E

DIRECTION MATCHES PLANS _____

LOOKING SOUTH THRU SPAN 1

INSPECTED BY JEREMY WHITE	SIGNATURE 	ASSISTED BY WILLIAM VAUGHAN
------------------------------	---------------	--------------------------------

NATIONAL BRIDGE INVENTROY ----- STRUCTURE INVENTORY AND APPRAISAL

04/21/2022

IDENTIFICATION

(1) STATE NAME NORTH CAROLINA BRIDGE 180022
 (8) STRUCTURE NUMBER (FEDERAL) 0370022
 (5) INVENTORY ROUTE (ON/UNDER) ON 31021350
 (2) STATE HIGHWAY DEPARTMENT DISTRICT 8
 (3) COUNTY CODE (FEDERAL) 37 (4) PLACE CODE 0
 (6) FEATURE INTERSECTED US421
 (7) FACILITY CARRIED SR2135
 (9) LOCATION 0.5 MI. E. JCT. SR2333
 (11) MILEPOINT 0.0
 (12) BASE HIGHWAY NETWORK 0
 (13) LRS INVENTORY ROUTE & SUBROUTE
 (16) LATITUDE 35° 35' 48.31" (17) LONGITUDE 79° 19' 2.18"
 (98) BORDER BRIDGE STATE CODE PERCENT SHARED
 (99) BORDER BRIDGE STRUCTURE NUMBER

SUFFICIENCY RATING 84.00
 STATUS = Functionally Obsolete

CLASSIFICATION **CODE**

(112) NBIS BRIDGE SYSTEM YES
 (104) HIGHWAY SYSTEM Inventory Route not on NHS 0
 (26) FUNCTIONAL CLASS Rural Local 09
 (100) STRAHNET HIGHWAY Not a STRAHNET Route 0
 (101) PARALLEL STRUCTURE 0
 (102) DIRECTION OF TRAFFIC 2-way traffic 2
 (103) TEMPORARY STRUCTURE
 (110) DESIGNATED NATIONAL NETWORK - on national network for trucks 0
 (20) TOLL On Free Road 3
 (21) MAINT - 01
 (22) OWNER - 01
 (37) HISTORICAL SIGNIFICANCE - 5

STRUCTURE TYPE AND MATERIAL

(43) STRUCTURE TYPE MAIN Steel Continuous
 TYPE Stringer/Multi-beam or girder CODE 402
 (44) STRUCTURE TYPE APPROACH
 TYPE CODE
 (45) NUMBER OF SPANS IN MAIN UNIT 2
 (46) NUMBER OF SPANS IN APPROACH 0
 (107) DECK STRUCTURE TYPE CODE 1
 (108) WEARING SURFACE/PROTECTIVE SYSTEM
 (A) TYPE OF WEARING SURFACE CODE 1
 (B) TYPE OF MEMBRANE CODE 0
 (C) TYPE OF DECK PROTECTION CODE 0

CONDITION **CODE**

(58) DECK 5
 (59) SUPERSTRUCTURE 5
 (60) SUBSTRUCTURE 5
 (61) CHANNEL & CHANNEL PROTECTION N
 (62) CULVERTS N

LOAD RATING AND POSTING **CODE**

(31) DESIGN LOAD H 20 + Mod 6
 (63) OPERATING RATING METHOD - Load Factor 1
 (64) OPERATING RATING - HS-52 94
 (65) INVENTORY RATING METHOD - 1
 (66) INVENTORY RATING HS-31 56
 (70) BRIDGE POSTING No Posting Required 5
 (41) STRUCTURE OPEN, POSTED, OR CLOSED DESCRIPTION Open, no restriction A

AGE AND SERVICE

(27) YEAR BUILT 1971
 (106) YEAR RECONSTRUCTED 0
 (42) TYPE OF SERVICE ON - Highway
 OFF - Highway CODE 11
 (28) LANES ON STRUCTURE 2 LANES UNDER STRUCTURE 2
 (29) AVERAGE DAILY TRAFFIC 430
 (30) YEAR OF ADT 2016 (109) TRUCK ADT PCT 6
 (19) BYPASS OR DETOUR LENGTH 0.0

APPRAISAL **CODE**

(67) STRUCTURAL EVALUATION 5
 (68) DECK GEOMETRY N
 (69) UNDERCLEARANCES, VERT & HORIZ 3
 (71) WATERWAY ADEQUACY N
 (72) APPROACH ROADWAY ALIGNMENT 8
 (36) TRAFFIC SAFETY FEATURES N
 (113) SCOUR CRITICAL BRIDGES N

GEOMETRIC DATA

(48) LENGTH OF MAXIMUM SPAN 109.0
 (49) STRUCTURE LENGTH 215.0
 (50) CURB OR SIDEWALK: LEFT 0.0 RIGHT 0.0
 (51) BRIDGE ROADWAY WIDTH, CURB TO CURB 35.8
 (52) DECK WIDTH OUT TO OUT 38.5
 (32) APPROACH ROADWAY WITH (W/ SHOULDERS) 21.0
 (33) BRIDGE MEDIAN CODE 5
 (34) SKEW 18 (35) STRUCTURE FLARED 1110
 (10) INVENTORY ROUTE MIN VERT CLEAR 999.9
 (47) INVENTORY ROUTE TOTAL HORIZ CLEAR
 (53) MIN VERT CLEAR OVER BRIDGE RDWY 999.9
 (54) MIN VERT UNDERCLEAR: REFERENCE H 14.9
 (55) MIN LAT UNDERCLEARANCE RT: REFERENCE H 10.0
 (56) MIN LAT UNDERCLEARANCE LT: 22.0

PROPOSED IMPROVEMENTS

(75) TYPE OF WORK CODE
 (76) LENGTH OF STRUCTURE IMPROVEMENT
 (94) BRIDGE IMPROVEMENT COST
 (95) ROADWAY IMPROVEMENT COST
 (96) TOTAL PROJECT COST
 (97) YEAR OF IMPROVEMENT COST ESTIMATE
 (114) FUTURE ADT 860 YEAR OF FUTURE ADT 2040

NAVIGATION DATA

(38) NAVIGATION CONTROL - CODE 5
 (111) PIER PROTECTION CODE
 (39) NAVIGATION VERTICAL CLEARANCE
 (116) VERT - LIFT BRIDGE NAV MIN VERT CLEAR 0.0
 (40) NAVIGATION HORIZONTAL CLEARANCE

INSPECTION

(90) INSPECTION DATE 11/21 (91) FREQUENCY 24
 (92) CRITICAL FEATURE INSPECTION (93) CFI DATE
 A) FRACTURE CRIT DETAIL A)
 B) UNDERWATER INSP B)
 C) OTHER SPECIAL INSP C)

SCOUR

Span Number	Facility Carried	Inventory Route	Maximum Minimum Vertical Clearance	Milepoint	Base Highway	LRS Inventory Route	Functional Classification	Number of Lanes	Average Daily Traffic	Year of Average Daily Traffic	Total Horizontal Clearance	See Note Below					STRAHNET Highway	Direction of Traffic	National Highway System	National Truck Network
												Reference Feature	Minimum Vertical Underclearance	Righth Lateral Underclearance	Left Lateral Underclearance	Underclearance Appraisal Grade				
	7	5	10	11	12	13	26	28	29	30	47	54A	54	55	56	69	100	102	104	110
1	US421S	21004210	15.0	157.8	1	20421	2	2	5500	2015	63.0	H	14.9	10.0	22.0	3		1	<input type="checkbox"/>	<input type="checkbox"/>
1	US421S	21004210	15.0	157.8	1	20421	2	2	5500	2015	63.0	H	14.9	10.0	22.0	3	0	1	<input type="checkbox"/>	<input type="checkbox"/>
2	US421N	21004210	15.6	157.8	1	20421	2	2	5500	2015	50.6	H	15.5	10.0	16.6	4	0	1	<input type="checkbox"/>	<input type="checkbox"/>
2	US421N	21004210	15.6	157.8	1	20421	2	2	5500	2015	50.6	H	15.5	10.0	16.6	4		1	<input type="checkbox"/>	<input type="checkbox"/>

Note: Items 54, 55, and 56 are not reported FHWA under route data points but are collected for each under route to determine the minimum value for Underclearance Appraisal Item 69.

Structure Element Scoring

Structure Number: 180022

Inspection Date 4/19/2022

Element Number	Parent Number	Element Name	Location	Total Quantity	Level 1 Quantity	Level 2 Quantity	Level 3 Quantity	Level 4 Quantity
12	0	Reinforced Concrete Deck	Deck	8278	3365	693	4220	0
107	0	Steel Open Girder/Beam	Beam	1070	284	786	0	0
515	107	Steel Protective Coating	Beam	19480	17546	154	0	1780
205	0	Reinforced Concrete Column	Piles and Columns	3	3	0	0	0
215	0	Reinforced Concrete Abutment	Abutments	80	80	0	0	0
225	0	Steel Pile	Foundation Pile	1	1	0	0	0
225	0	Steel Pile	Piles and Columns	24	24	0	0	0
234	0	Reinforced Concrete Pier Cap	Caps	134	88	13	33	0
313	0	Fixed Bearing	Bearing Device	15	7	8	0	0
515	313	Steel Protective Coating	Bearing Device	15	2	5	0	8
331	0	Reinforced Concrete Bridge Railing	Bridge Rail	430	430	0	0	0

Summary of Maintenance Needs

Maintenance By Defect

Structure Number: 180022

Inspection Date: 04/19/2022

MMS Code	Element Name	Defect Name	Recommended Quantity
3326	Reinforced Concrete Deck	Cracking (RC and Other)	3920 Square Feet
3326	Reinforced Concrete Deck	Exposed Rebar	1 Square Feet
3326	Reinforced Concrete Deck	Abrasion/Wear (PSC/RC)	300 Square Feet
3326	Reinforced Concrete Deck	Delamination/Spall	55 Square Feet
3314	Steel Open Girder/Beam	Damage	9 Feet
3348	Reinforced Concrete Pier Cap	Efflorescence/Rust Staining	5 Feet
3348	Reinforced Concrete Pier Cap	Cracking (RC and Other)	28 Feet
3342	Steel Protective Coating	Effectiveness (Steel Protective Coatings)	1683 Square Feet
3342	Steel Protective Coating	Peeling/Bubbling/Cracking (steel Protective Coatings)	264 Square Feet

Element Structure Maintenance Quantities

Structure Number: 180022

Inspection Date 04/19/2022

Location	MMS Code	Description	Maint Quantity	Total Quantity	Severe Quantity	Poor Quantity	Fair Quantity	Good Quantity
Abutments	3350	Maintenance of Concrete Wings and Wall	0	80	0	0	0	80
Beam	3314	Maintenance Steel Superstructure Components	9	1070	0	0	786	284
Beam	3342	Clean and Paint Steel	1934	19480	1780	0	154	17546
Bearing Device	3334	Bridge Bearing	0	15	0	0	8	7
Bearing Device	3342	Clean and Paint Steel	13	15	8	0	5	2
Bridge Rail	3318	Maintenance of Concrete Bridge Rail	0	430	0	0	0	430
Caps	3348	Maintenance of Concrete Substructure	33	134	0	33	13	88
Deck	3326	Maintenance of Concrete Deck	4276	8278	0	4220	693	3365
Foundation Pile	3354	Maintenance of Steel Substructure Components	0	1	0	0	0	1
Piles and Columns	3348	Maintenance of Concrete Substructure	0	3	0	0	0	3
Piles and Columns	3354	Maintenance of Steel Substructure Components	0	24	0	0	0	24

Priority Actions Request

Structure Number 180022

Span1

3314	Beam 1	Plate Girder		
Priority Level	Defect Type	Quantity	Defect Description	
2	Damage	2	Span 1 Beam 1: IMPACT DAMAGE 4/2022 - 24" DIAMETER SECTION OF WEB DEFLECTED 1-1/4" TO THE NORTH AT INT. DIAPHRAGM 2 CONNECTION (PAR)	
2	Damage	2	Span 1 Beam 1: IMPACT DAMAGE 4/2022 - 24" DIAMETER SECTION OF WEB DEFLECTED 1-1/4" TO THE NORTH AT INT. DIAPHRAGM 3 CONNECTION (PAR)	
2	Damage	1	Span 1 Beam 1: IMPACT DAMAGE 4/2022: (2) INDENTIONS UP TO 1-1/2"W x 5/8"D ON NORTH EDGE OF BOTTOM FLANGE AT 55' FROM END BENT 1 BEARING (PAR)	
2	Damage	23	Span 1 Beam 1: IMPACT DAMAGE 4/2022: 23LF OF BEAM OUT OF PLUMB TO THE SOUTH UP TO 4-3/4" - MAX DEFLECTION AT 55' FROM END BENT 1 BEARING - SECTION LOCATED BETWEEN INT. DIAPHRAGMS 2 AND 3 (PAR)	
2	Damage	1	Span 1 Beam 1: IMPACT DAMAGE 4/2022: INDENTIONS UP TO 1-1/2"W x 1/4"D SCATTERED ALONG 10" SECTION OF BOTTOM FLANGE ON NORTH SIDE - LOCATED 56' FROM END BENT 1 BEARING (PAR)	

3314	Beam 4	Plate Girder		
Priority Level	Defect Type	Quantity	Defect Description	
2	Damage	1	Span 1 Beam 4: IMPACT DAMAGE 4/2022: 3-1/2"L GOUGE UP TO 5/8"D ON NORTH EDGE OF BOTTOM FLANGE - LOCATED 56' FROM END BENT 1 BEARING (PAR)	

3314	Beam 5	Plate Girder		
Priority Level	Defect Type	Quantity	Defect Description	
2	Damage	1	Span 1 Beam 5: IMPACT DAMAGE 4/2022: 2"W x 3"L x 3/8"D GOUGE ON NORTH EDGE OF BOTTOM FLANGE AT 56' FROM END BENT 1 BEARING (PAR)	

Priority Action Request Issued (10)

3256	Priority Action Request Issued (10)	Priority Action Request Issued (10)		
Priority Level	Defect Type	Quantity	Defect Description	
2		1	Span 1 Bay 1: IMPACT DAMAGE 4/2022 - INT. DIAPHRAGM 2, BEAM 1 CONNECTION, BOTTOM WELD - 4"L CRACK AT TOE OF WELD. BOTTOM 10" OF BRACKET BENT 4" TO THE WEST (PAR)	
2		1	Span 1 Bay 1: IMPACT DAMAGE 4/2022 - INT. DIAPHRAGM 3, BEAM 1 CONNECTION, BOTTOM WELD - 3"L CRACK AT TOE OF WELD. BOTTOM 10" OF BRACKET BENT 3-1/2" TO THE WEST (PAR)	

Element Condition and Maintenance Data

Structure Number: 180022

Inspection Date: 04/19/2022

Span 1	Deck	
Reinforced Concrete Deck		

Element Number	Element Name	Total Qty	CS1 Qty	CS2 Qty	CS3 Qty	CS4 Qty
12	Reinforced Concrete Deck	4,235	1,420	345	2,470	0 Square Feet

Element Number	Defect Type	Defect Description	CS	CS Qty	Maint Qty
12	Abrasion/Wear (PSC/RC)	ABRASION AND WEAR WITH AGGREGATE POPPING OUT	3	200	200 Square Feet
12	Cracking (RC and Other)	MAP CRACKING UP TO 1/16" WIDE	3	2,000	2,000 Square Feet
12	Cracking (RC and Other)	TRANSVERSE CRACKS UP TO 1/8" WIDE	3	270	270 Square Feet
12	Abrasion/Wear (PSC/RC)	ABRASION AND WEAR ON TOP OF DECK	2	200	Square Feet
12	Delamination/Spall	SPALLS ALONG EDGE AT END BENT 1 UP TO 2" WIDE	2	20	20 Square Feet
12	Efflorescence/Rust Staining	EFFLORESCENCE ON UNDERSIDE FROM TRANSVERSE CRACKING ON TOP	2	125	Square Feet

General Comments

Span 1	Beam 1	
Plate Girder		

Element Number	Element Name	Total Qty	CS1 Qty	CS2 Qty	CS3 Qty	CS4 Qty
107	Steel Open Girder/Beam	214	108	106	0	0 Feet
515	Steel Protective Coating	3,896	3,592	4	0	300 Square Feet

Element Number	Defect Type	Defect Description	CS	CS Qty	Maint Qty
107	Damage	23LF OF BEAM OUT OF PLUMB TO THE SOUTH UP TO 4-3/4" - MAX DEFLECTION AT 55' FROM END BENT 1 BEARING - SECTION LOCATED BETWEEN INT. DIAPHRAGMS 2 AND 3 (PAR)	3	23	Feet
107	Damage	IMPACT DAMAGE 4/2022 - 24" DIAMETER SECTION OF WEB DEFLECTED 1-1/4" TO THE NORTH AT INT. DIAPHRAGM 2 CONNECTION (PAR)	3	2	Feet
107	Damage	IMPACT DAMAGE 4/2022: (2) INDENTIONS UP TO 1-1/2"W x 5/8"D ON NORTH EDGE OF BOTTOM FLANGE AT 55' FROM END BENT 1 BEARING (PAR)	3	1	Feet
107	Damage	IMPACT DAMAGE 4/2022: INDENTIONS UP TO 1-1/2"W x 1/4"D SCATTERED ALONG 10" SECTION OF BOTTOM FLANGE ON NORTH SIDE - LOCATED 56' FROM END BENT 1 BEARING (PAR)	3	1	Feet
107	Damage	Span 1 Beam 1: IMPACT DAMAGE 4/2022 - 24" DIAMETER SECTION OF WEB DEFLECTED 1-1/4" TO THE NORTH AT INT. DIAPHRAGM 3 CONNECTION (PAR)	3	2	Feet
107	Corrosion	RUST SCALE WITH 1/16" SECTION LOSS ON BOTTOM FLANGE IN FRONT AND BACK OF BEARING AT END BENT 1 LEAVING 13/16" STEEL REMAINING, BEAM END PAINTED WITH RED PRIMER	2	1	Feet
107	Corrosion	SCRAPES ON BOTTOM FLANGE IN SPAN 1	2	5	Feet
107	Corrosion	SURFACE AND FRECKLED RUST ALONG FLANGES	2	90	Feet
107	Damage	1/2" DIVOT ON BOTTOM FLANGE OVER RIGHT LANE IN SPAN 1	2	1	1 Feet
107	Damage	IMPACT DAMAGE 4/2022: (3) GOUGES UP TO 2"L x 1/16"D SCATTERED ON BOTTOM 18" OF WEB - LOCATED 55' FROM END BENT 1 BEARING	2	1	Feet
107	Damage	SCRAPES ON BOTTOM FLANGE IN SPAN 2	2	8	8 Feet
107	Distortion	1/2" DIVOT ON BOTTOM FLANGE NEAR SPLICE IN SPAN 2 OVER INSIDE LANE	2	1	Feet

Structure Number: **180022**

Inspection Date: **04/19/2022**

515	Effectiveness (Steel Protective Coatings)	LIMITED EFFECTIVENESS	4	300	300	Square Feet
515	Peeling/Bubbling/Cracking (steel Protective Coatings)	PAINT PEELING ON WEB IN SPAN 1	2	4	4	Square Feet

General Comments

Span 1 **Beam 2**
Plate Girder

Element Number	Element Name	Total Qty	CS1 Qty	CS2 Qty	CS3 Qty	CS4 Qty
107	Steel Open Girder/Beam	214	14	200	0	0 Feet
515	Steel Protective Coating	3,896	3,491	5	0	400 Square Feet

Element Number	Defect Type	Defect Description	CS	CS Qty	Maint Qty
107	Corrosion	SURFACE RUST ALONG FLANGES	2	200	Feet
515	Effectiveness (Steel Protective Coatings)	LIMITED EFFECTIVENESS	4	400	400 Square Feet
515	Peeling/Bubbling/Cracking (steel Protective Coatings)	PAINT PEELING ON BOTTOM FLANGE IN SPAN 2	2	5	5 Square Feet

General Comments

Span 1 **Beam 3**
Plate Girder

Element Number	Element Name	Total Qty	CS1 Qty	CS2 Qty	CS3 Qty	CS4 Qty
107	Steel Open Girder/Beam	214	14	200	0	0 Feet
515	Steel Protective Coating	3,896	3,396	70	0	430 Square Feet

Element Number	Defect Type	Defect Description	CS	CS Qty	Maint Qty
107	Corrosion	SURFACE RUST ALONG FLANGES	2	200	Feet
515	Effectiveness (Steel Protective Coatings)	LIMITED EFFECTIVENESS	4	400	400 Square Feet
515	Peeling/Bubbling/Cracking (steel Protective Coatings)	PAINT PEELING ON BOTTOM FLANGE SPAN 2	4	30	30 Square Feet
515	Peeling/Bubbling/Cracking (steel Protective Coatings)	PAINT PEELING ON BOTTOM FLANGE IN SPAN 2	2	70	70 Square Feet

General Comments

Span 1 **Beam 4**
Plate Girder

Element Number	Element Name	Total Qty	CS1 Qty	CS2 Qty	CS3 Qty	CS4 Qty
107	Steel Open Girder/Beam	214	74	140	0	0 Feet
515	Steel Protective Coating	3,896	3,521	75	0	300 Square Feet

Element Number	Defect Type	Defect Description	CS	CS Qty	Maint Qty
107	Damage	IMPACT DAMAGE 4/2022: 3-1/2" L GOUGE UP TO 5/8" D ON NORTH EDGE OF BOTTOM FLANGE - LOCATED 56' FROM END BENT 1 BEARING (PAR)	3	1	Feet
107	Corrosion	SURFACE RUST ALONG FLANGES	2	140	Feet

Structure Number: **180022**

Inspection Date: **04/19/2022**

515	Effectiveness (Steel Protective Coatings)	LIMITED EFFECTIVENESS	4	300	300	Square Feet
515	Peeling/Bubbling/Cracking (steel Protective Coatings)	PAINT PEELING ON BOTTOM FLANGE IN SPAN 2	2	75	75	Square Feet

General Comments

Span 1 Beam 5
Plate Girder

Element Number	Element Name	Total Qty	CS1 Qty	CS2 Qty	CS3 Qty	CS4 Qty	
107	Steel Open Girder/Beam	214	74	140	0	0	Feet
515	Steel Protective Coating	3,896	3,546	0	0	350	Square Feet

Element Number	Defect Type	Defect Description	CS	CS Qty	Maint Qty	
107	Damage	IMPACT DAMAGE 4/2022: 2"W x 3"L x 3/8"D GOUGE ON NORTH EDGE OF BOTTOM FLANGE AT 56' FROM END BENT 1 BEARING (PAR)	3	1		Feet
107	Corrosion	SURFACE RUST ALONG FLANGES AND WHERE PAINTS PEELED	2	140		Feet
107	Damage	IMPACT DAMAGE 4/2022: (3) GOUGES UP TO 2"L x 1/2"W x 1/16"D ON BOTTOM SIDE OF BOTTOM FLANGE - LOCATED 55'-6" FROM END BENT 1 BEARING	2	1		Feet
107	Damage	IMPACT DAMAGE 4/2022: 13"L x 1/2"W x 1/4"D INDENTION ON NORTH EDGE OF BOTTOM FLANGE AT 57' FROM END BENT 1 BEARING	2	1		Feet
515	Effectiveness (Steel Protective Coatings)	LIMITED EFFECTIVENESS	4	275	275	Square Feet
515	Peeling/Bubbling/Cracking (steel Protective Coatings)	PAINT PEELING ON BOTTOM FLANGE SPAN 2	4	75	75	Square Feet

General Comments

Span 1 Near Bearing 1
Fixed Bearing

Element Number	Element Name	Total Qty	CS1 Qty	CS2 Qty	CS3 Qty	CS4 Qty	
313	Fixed Bearing	1	0	1	0	0	Each
515	Steel Protective Coating	1	0	0	0	1	Square Feet

Element Number	Defect Type	Defect Description	CS	CS Qty	Maint Qty	
313	Connection	50% LOSS ON LEFT ANCHOR NUT AT END BENT 1, NO LOSS ON RIGHT	2			Each
313	Corrosion	BEARING BEEN PAINTED WITH RED PRIMER/ RUST SCALE ON BEARING WHERE PAINTS POPPING OFF	2	1		Each
515	Effectiveness (Steel Protective Coatings)	NO PROTECTION	4	1	1	Square Feet

General Comments

Span 1 Far Bearing 1**Fixed Bearing**

Element Number	Element Name	Total Qty	CS1 Qty	CS2 Qty	CS3 Qty	CS4 Qty
313	Fixed Bearing	1	0	1	0	0 Each
515	Steel Protective Coating	1	0	0	0	1 Square Feet

Element Number	Defect Type	Defect Description	CS	CS Qty	Maint Qty
313	Corrosion	BEARING BEEN PAINTED WITH RED PRIMER WITH SCATTERED SURFACE CORROSION	2	1	Each
515	Effectiveness (Steel Protective Coatings)	PROTECTIVE COATING FAILURE	4	1	1 Square Feet

General Comments**Span 1 Near Bearing 2****Fixed Bearing**

Element Number	Element Name	Total Qty	CS1 Qty	CS2 Qty	CS3 Qty	CS4 Qty
313	Fixed Bearing	1	0	1	0	0 Each
515	Steel Protective Coating	1	0	0	0	1 Square Feet

Element Number	Defect Type	Defect Description	CS	CS Qty	Maint Qty
313	Corrosion	BEARING BEEN PAINTED WITH RED PRIMER WITH SCATTERED SURFACE CORROSION	2	1	Each
515	Effectiveness (Steel Protective Coatings)	PROTECTIVE COATING FAILURE	4	1	1 Square Feet

General Comments**Span 1 Far Bearing 2****Fixed Bearing**

Element Number	Element Name	Total Qty	CS1 Qty	CS2 Qty	CS3 Qty	CS4 Qty
313	Fixed Bearing	1	0	1	0	0 Each
515	Steel Protective Coating	1	0	0	0	1 Square Feet

Element Number	Defect Type	Defect Description	CS	CS Qty	Maint Qty
313	Corrosion	BEARING BEEN PAINTED WITH RED PRIMER WITH SCATTERED SURFACE CORROSION	2	1	Each
515	Effectiveness (Steel Protective Coatings)	PROTECTIVE COATING FAILURE	4	1	1 Square Feet

General Comments**Span 1 Near Bearing 3****Fixed Bearing**

Element Number	Element Name	Total Qty	CS1 Qty	CS2 Qty	CS3 Qty	CS4 Qty
313	Fixed Bearing	1	1	0	0	0 Each
515	Steel Protective Coating	1	1	0	0	0 Square Feet

Element Number	Defect Type	Defect Description	CS	CS Qty	Maint Qty
313	Corrosion	BEARING BEEN PAINTED WITH RED PRIMER	1	1	Each

General Comments**Span 1 Far Bearing 3****Fixed Bearing**

Element Number	Element Name	Total Qty	CS1 Qty	CS2 Qty	CS3 Qty	CS4 Qty	
313	Fixed Bearing	1	0	1	0	0	Each
515	Steel Protective Coating	1	0	0	0	1	Square Feet

Element Number	Defect Type	Defect Description	CS	CS Qty	Maint Qty	
313	Corrosion	BEARING BEEN PAINTED WITH RED PRIMER WITH SCATTERED SURFACE CORROSION	2	1		Each
515	Effectiveness (Steel Protective Coatings)	PROTECTIVE COATING FAILURE	4	1	1	Square Feet

General Comments**Span 1 Near Bearing 4****Fixed Bearing**

Element Number	Element Name	Total Qty	CS1 Qty	CS2 Qty	CS3 Qty	CS4 Qty	
313	Fixed Bearing	1	1	0	0	0	Each
515	Steel Protective Coating	1	1	0	0	0	Square Feet

Element Number	Defect Type	Defect Description	CS	CS Qty	Maint Qty	
313	Corrosion	BEARING BEEN PAINTED WITH RED PRIMER	1	1		Each

General Comments**Span 1 Far Bearing 4****Fixed Bearing**

Element Number	Element Name	Total Qty	CS1 Qty	CS2 Qty	CS3 Qty	CS4 Qty	
313	Fixed Bearing	1	0	1	0	0	Each
515	Steel Protective Coating	1	0	0	0	1	Square Feet

Element Number	Defect Type	Defect Description	CS	CS Qty	Maint Qty	
313	Corrosion	BEARING BEEN PAINTED WITH RED PRIMER WITH SCATTERED SURFACE CORROSION	2	1		Each
515	Effectiveness (Steel Protective Coatings)	PROTECTIVE COATING FAILURE	4	1	1	Square Feet

General Comments**Span 1 Near Bearing 5****Fixed Bearing**

Element Number	Element Name	Total Qty	CS1 Qty	CS2 Qty	CS3 Qty	CS4 Qty	
313	Fixed Bearing	1	0	1	0	0	Each
515	Steel Protective Coating	1	0	0	0	1	Square Feet

Element Number	Defect Type	Defect Description	CS	CS Qty	Maint Qty	
313	Corrosion	BEARING BEEN PAINTED WITH RED PRIMER WITH SCATTERED SURFACE CORROSION	2	1		Each

Structure Number: **180022**

Inspection Date: **04/19/2022**

515	Effectiveness (Steel Protective Coatings)	PROTECTIVE COATING FAILURE	4	1	1	Square Feet
------------	---	----------------------------	---	---	---	-------------

General Comments

Span 1 Far Bearing 5

Fixed Bearing

Element Number	Element Name	Total Qty	CS1 Qty	CS2 Qty	CS3 Qty	CS4 Qty
313	Fixed Bearing	1	0	1	0	0 Each
515	Steel Protective Coating	1	0	0	0	1 Square Feet

Element Number	Defect Type	Defect Description	CS	CS Qty	Maint Qty
313	Corrosion	BEARING BEEN PAINTED WITH RED PRIMER WITH SCATTERED SURFACE CORROSION	2	1	Each
515	Effectiveness (Steel Protective Coatings)	PROTECTIVE COATING FAILURE	4	1	1 Square Feet

General Comments

Span 1 Intermediate Bearing 1

Fixed Bearing

Element Number	Element Name	Total Qty	CS1 Qty	CS2 Qty	CS3 Qty	CS4 Qty
313	Fixed Bearing	1	1	0	0	0 Each
515	Steel Protective Coating	1	0	1	0	0 Square Feet

Element Number	Defect Type	Defect Description	CS	CS Qty	Maint Qty
515	Peeling/Bubbling/Cracking (steel Protective Coatings)	PAINT PEELING	2	1	1 Square Feet

General Comments

Span 1 Intermediate Bearing 2

Fixed Bearing

Element Number	Element Name	Total Qty	CS1 Qty	CS2 Qty	CS3 Qty	CS4 Qty
313	Fixed Bearing	1	1	0	0	0 Each
515	Steel Protective Coating	1	0	1	0	0 Square Feet

Element Number	Defect Type	Defect Description	CS	CS Qty	Maint Qty
515	Peeling/Bubbling/Cracking (steel Protective Coatings)	PAINT PEELING	2	1	1 Square Feet

General Comments

Span 1 Intermediate Bearing 3**Fixed Bearing**

Element Number	Element Name	Total Qty	CS1 Qty	CS2 Qty	CS3 Qty	CS4 Qty
313	Fixed Bearing	1	1	0	0	0 Each
515	Steel Protective Coating	1	0	1	0	0 Square Feet

Element Number	Defect Type	Defect Description	CS	CS Qty	Maint Qty
515	Peeling/Bubbling/Crack	PAINTE PEELING ing (steel Protective Coatings)	2	1	1 Square Feet

General Comments**Span 1 Intermediate Bearing 4****Fixed Bearing**

Element Number	Element Name	Total Qty	CS1 Qty	CS2 Qty	CS3 Qty	CS4 Qty
313	Fixed Bearing	1	1	0	0	0 Each
515	Steel Protective Coating	1	0	1	0	0 Square Feet

Element Number	Defect Type	Defect Description	CS	CS Qty	Maint Qty
515	Peeling/Bubbling/Crack	PAINTE PEELING ing (steel Protective Coatings)	2	1	1 Square Feet

General Comments**Span 1 Intermediate Bearing 5****Fixed Bearing**

Element Number	Element Name	Total Qty	CS1 Qty	CS2 Qty	CS3 Qty	CS4 Qty
313	Fixed Bearing	1	1	0	0	0 Each
515	Steel Protective Coating	1	0	1	0	0 Square Feet

Element Number	Defect Type	Defect Description	CS	CS Qty	Maint Qty
515	Peeling/Bubbling/Crack	PAINTE PEELING ing (steel Protective Coatings)	2	1	1 Square Feet

General Comments**Span 2 Deck****Reinforced Concrete Deck**

Element Number	Element Name	Total Qty	CS1 Qty	CS2 Qty	CS3 Qty	CS4 Qty
12	Reinforced Concrete Deck	4,043	1,945	348	1,750	0 Square Feet

Element Number	Defect Type	Defect Description	CS	CS Qty	Maint Qty
12	Abrasion/Wear (PSC/RC)	ABRASION AND WEAR WITH AGGREGATE POPPING OUT ALONG LEFT RAIL AND IN WBL	3	100	100 Square Feet
12	Cracking (RC and Other)	MAP CRACKING UP TO 1/8" WIDE	3	1,500	1,500 Square Feet
12	Cracking (RC and Other)	TRANSVERSE CRACKS UP TO 1/16" WIDE	3	150	150 Square Feet

Structure Number: **180022**

Inspection Date: **04/19/2022**

12	Abrasion/Wear (PSC/RC)	ABRASION AND WEAR ON DECK	2	300		Square Feet
12	Delamination/Spall	3' DIAMATER DELAM AREA NEAR LEFT EDGE	2	9	9	Square Feet
12	Delamination/Spall	CHIP SPALLS ALONG CONSTRUCTION JOINT UP TO 6" LONG X 1" WIDE	2	1	1	Square Feet
12	Delamination/Spall	DELAM AREAS IN CENTER UP TO 5' LONG X 2' WIDE	2	25	25	Square Feet
12	Efflorescence/Rust Staining	EFFLORESCENCE ON UNDERSIDE FROM TRANSVERSE CRACKING ON TOP IN BAYS 3 AND 4	2	12		Square Feet
12	Exposed Rebar	REBAR TO CLOSE TO SURFACE ON NORTH OVERHANG AT CONSTRUCTION JOINT NEAREST TO END BENT 2	2	1	1	Square Feet

General Comments

Bent 1 Cap 1

Reinforced Concrete Pier Cap

Element Number	Element Name	Total Qty	CS1 Qty	CS2 Qty	CS3 Qty	CS4 Qty
234	Reinforced Concrete Pier Cap	38	30	8	0	0 Feet

Element Number	Defect Type	Defect Description	CS	CS Qty	Maint Qty
234	Cracking (RC and Other)	DIAGONAL CRACK 1/64" WIDE UNDER BEAM 5 ON BOTH FACES	2	2	Feet
234	Cracking (RC and Other)	VERTICAL CRACK 1/64" WIDE UNDER BEAM 3 AT STEPUP	2	2	Feet
234	Cracking (RC and Other)	VERTICAL CRACKS 1/64" WIDE IN BAY 4 ON BOTH FACES	2	4	Feet

General Comments

End Bent 1 Cap 1

Reinforced Concrete Pier Cap

Element Number	Element Name	Total Qty	CS1 Qty	CS2 Qty	CS3 Qty	CS4 Qty
234	Reinforced Concrete Pier Cap	48	43	5	0	0 Feet

Element Number	Defect Type	Defect Description	CS	CS Qty	Maint Qty
234	Cracking (RC and Other)	VERTICAL CRACKS 1/64" WIDE UNDER BEAM 3 AND IN BAY 3	2	3	Feet
234	Cracking (RC and Other)	VERTICAL WITH TRANSVERSE CRACKS AT STEPUPS 1/32" WIDE IN BAYS 2 AND 4	2	2	Feet
234	Cracking (RC and Other)	HAIRLINE CRACKING UNDER BEAM 5	1	1	Feet

General Comments

End Bent 2 Cap 1

Reinforced Concrete Pier Cap

Element Number	Element Name	Total Qty	CS1 Qty	CS2 Qty	CS3 Qty	CS4 Qty
234	Reinforced Concrete Pier Cap	48	15	0	33	0 Feet

Element Number	Defect Type	Defect Description	CS	CS Qty	Maint Qty
234	Cracking (RC and Other)	LONGITUDINAL CRACK UP TO 1/4" WIDE ON FACE IN BAYS 1-4	3	28	28 Feet
234	Efflorescence/Rust Staining	RUST STAIN ON LONGITUDINAL CRACK IN BAY 4	3	5	5 Feet

General Comments

Elements Verified

Location	Name	Component	Element Name	Amount
----------	------	-----------	--------------	--------

General Inspection Notes

National Bridge and NC Inspection Items

Structure Number: 180022

Inspection Date: 04/19/2022

National Bridge Inventory Items

Item	Grade Scale	Grade
Item 58: Deck	0 - 9 , N	5
Item 59: Superstructure	0 - 9 , N	5
Item 60: Substructure	0 - 9 , N	5
Item 61: Channel and Channel Protection	0 - 9 , N	N
Item 62: Culvert	0 - 9 , N	N
Item 71: Waterway Adequacy	0 - 9 , N	N
Item 72: Approach Roadway Alignment	0 - 9 , N	8

Note:

Items 58,59,60,62 reflect this inspection only.

For overall NBI coding grade, see cover sheet.

Note: If NBI Inspection Item is not present, code NBI item with "N"

NC SMU Inspection Items

Item	Grade Scale	Grade	Maint. Qty.	Maint. Code
Deck Debris	G, F, P, or C	F	0	3376
Drainage System	G, F, P, or C	G	0	3332
Utilities	G, F, P, or C			
Slope Protection	G, F, P, or C	F	0	3352
Scour	G, F, P, or C			
Wingwall	G, F, P, or C		0	3350
Field Scour Evaluation				
Drift	G, F, P, or C		0	3366
Fender System	G, F, P, or C		0	3364
Movable Span Machinery	G, F, P, or C			
Response to Live Load	G, F, P, or C	G		
Superstructure Paint Code		A		

Note: If NC SMU Inspection Item is not present, leave NC SMU item blank

Inspection Information

Item	Grade Scale	Grade
Sign Noticed Issued	YES/NO	N
Priority Maintenance Request Submitted	YES/NO	Y
Inspection Time	Hours	5
Traffic Control Time	Hours	5
Snooper Time	Hours	
Ladder Used	YES/NO	N
Bucket Truck Used	YES/NO	Y
Boat Used	YES/NO	N
Other Equipment Used	YES/NO	N
Portion of Structure in > 3' of water	YES/NO	N

National Bridge and NC SMU Inspection Item Details

Structure Number: 180022

Inspection Date: 04/19/2022

Item	Deck - Item 58	Grade	5	Maint Code		Qty.	0
-------------	----------------	--------------	---	-------------------	--	-------------	---

Details GRADE CARRIED FROM 2021 ROUTINE INSPECTION REPORT

Item	Superstructure - Item 59	Grade	5	Maint Code		Qty.	0
-------------	--------------------------	--------------	---	-------------------	--	-------------	---

Details GRADED 5 DUE TO IMPACT DAMAGE - SEE ELEMENT ITEMS FOR DETAILS.

Item	Substructure - Item 60	Grade	5	Maint Code		Qty.	0
-------------	------------------------	--------------	---	-------------------	--	-------------	---

Details GRADE CARRIED FROM 2021 ROUTINE INSPECTION REPORT

Item	Deck Debris	Grade	F	Maint Code	3376	Qty.	0
-------------	-------------	--------------	---	-------------------	------	-------------	---

Details GRADE CARRIED FROM 2021 ROUTINE INSPECTION REPORT

Item	Drainage System	Grade	G	Maint Code	3332	Qty.	0
-------------	-----------------	--------------	---	-------------------	------	-------------	---

Details GRADE CARRIED FROM 2021 ROUTINE INSPECTION REPORT

Item	Slope Protection	Grade	F	Maint Code	3352	Qty.	0
-------------	------------------	--------------	---	-------------------	------	-------------	---

Details GRADE CARRIED FROM 2021 ROUTINE INSPECTION REPORT

Item	Response to live load	Grade	G	Maint Code		Qty.	0
-------------	-----------------------	--------------	---	-------------------	--	-------------	---

Details MINOR MOVEMENT UNDER HEAVY LIVE LOAD



Span 1 Beam 1: IMPACT DAMAGE 4/2022: (2) INDENTIONS UP TO 1-1/2"W x 5/8"D ON NORTH EDGE OF BOTTOM FLANGE AT 55' FROM END BENT 1 BEARING (PAR)



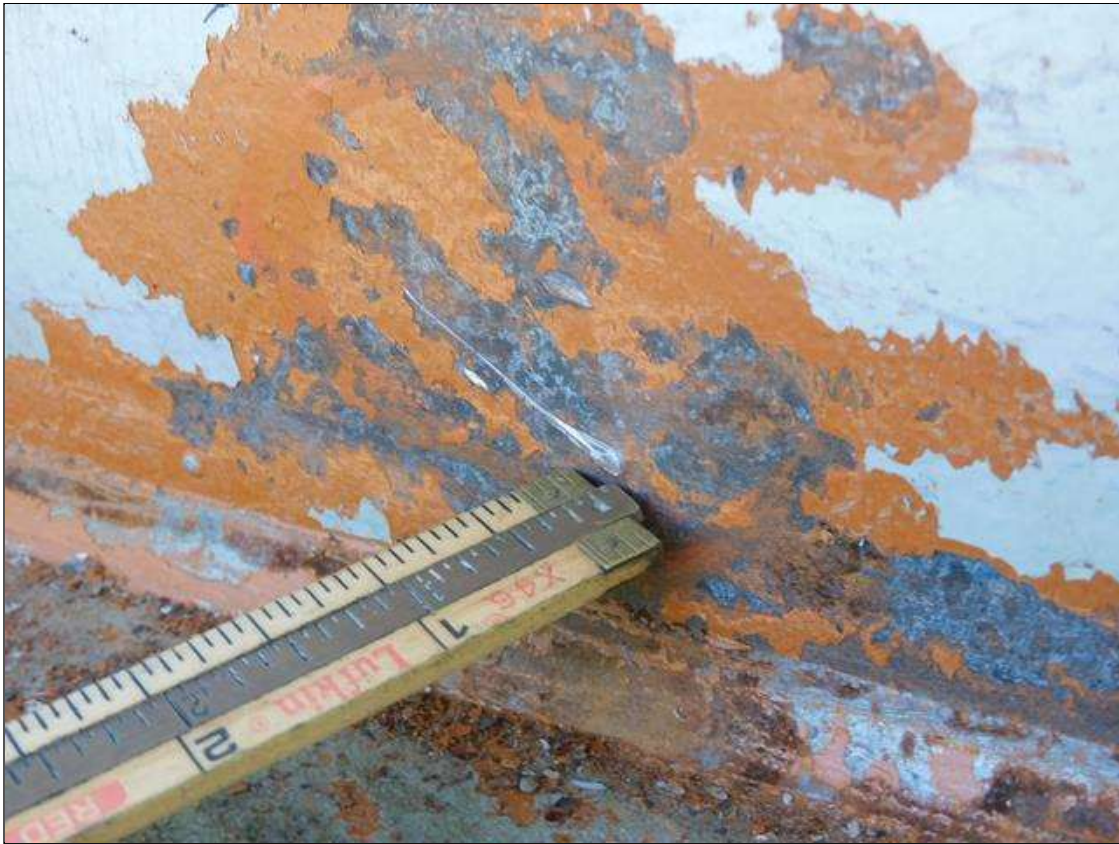
Span 1 Beam 1: IMPACT DAMAGE 4/2022: (2) INDENTIONS UP TO 1-1/2"W x 5/8"D ON NORTH EDGE OF BOTTOM FLANGE AT 55' FROM END BENT 1 BEARING (PAR)



Span 1 Beam 1: IMPACT DAMAGE 4/2022: (3) GOUGES UP TO 2"L x 1/16"D SCATTERED ON BOTTOM 18" OF WEB - LOCATED 55' FROM END BENT 1 BEARING



Span 1 Beam 1: IMPACT DAMAGE 4/2022: (3) GOUGES UP TO 2"L x 1/16"D SCATTERED ON BOTTOM 18" OF WEB - LOCATED 55' FROM END BENT 1 BEARING



Span 1 Beam 1: IMPACT DAMAGE 4/2022: (3) GOUGES UP TO 2"L x 1/16"D SCATTERED ON BOTTOM 18" OF WEB - LOCATED 55' FROM END BENT 1 BEARING



Span 1 Beam 1: IMPACT DAMAGE 4/2022: (3) GOUGES UP TO 2"L x 1/16"D SCATTERED ON BOTTOM 18" OF WEB - LOCATED 55' FROM END BENT 1 BEARING



Span 1 Beam 1: IMPACT DAMAGE 4/2022: INDENTIONS UP TO 1-1/2"W x 1/4"D SCATTERED ALONG 10" SECTION OF BOTTOM FLANGE ON NORTH SIDE - LOCATED 56' FROM END BENT 1 BEARING (PAR)



Span 1 Beam 1: IMPACT DAMAGE 4/2022: INDENTIONS UP TO 1-1/2"W x 1/4"D SCATTERED ALONG 10" SECTION OF BOTTOM FLANGE ON NORTH SIDE - LOCATED 56' FROM END BENT 1 BEARING (PAR)



Span 1 Beam 1: IMPACT DAMAGE 4/2022: 23LF OF BEAM OUT OF PLUMB TO THE SOUTH UP TO 4-3/4" - MAX DEFLECTION AT 55' FROM END BENT 1 BEARING - SECTION LOCATED BETWEEN INT. DIAPHRAGMS 2 AND 3 (PAR)



Span 1 Beam 1: IMPACT DAMAGE 4/2022: 23LF OF BEAM OUT OF PLUMB TO THE SOUTH UP TO 4-3/4" - MAX DEFLECTION AT 55' FROM END BENT 1 BEARING - SECTION LOCATED BETWEEN INT. DIAPHRAGMS 2 AND 3 (PAR)



Span 1 Beam 1: IMPACT DAMAGE 4/2022: 23LF OF BEAM OUT OF PLUMB TO THE SOUTH UP TO 4-3/4" - MAX DEFLECTION AT 55' FROM END BENT 1 BEARING - SECTION LOCATED BETWEEN INT. DIAPHRAGMS 2 AND 3 (PAR)



Span 1 Bay 1: IMPACT DAMAGE 4/2022 - INT. DIAPHRAGM 2, BEAM 1 CONNECTION, BOTTOM WELD - 4"L CRACK AT TOE OF WELD (PAR)



ALT VIEW - Span 1 Bay 1: IMPACT DAMAGE 4/2022 - INT. DIAPHRAGM 2, BEAM 1 CONNECTION, BOTTOM WELD - 4"L CRACK AT TOE OF WELD (PAR)



Span 1 Bay 1: IMPACT DAMAGE 4/2022 - INT. DIAPHRAGM 2, BEAM 1 CONNECTION BRACKET - BOTTOM 10" BENT 4" TO THE WEST (PAR)



Span 1 Beam 1: IMPACT DAMAGE 4/2022 - 24" DIAMETER SECTION OF WEB DEFLECTED 1-1/4" TO THE NORTH AT INT. DIAPHRAGM 2 CONNECTION (PAR)



Span 1 Beam 1: IMPACT DAMAGE 4/2022 - 24" DIAMETER SECTION OF WEB DEFLECTED 1-1/4" TO THE NORTH AT INT. DIAPHRAGM 2 CONNECTION (PAR)



Span 1 Beam 4: IMPACT DAMAGE 4/2022: 3-1/2"L GOUGE UP TO 5/8"D ON NORTH EDGE OF BOTTOM FLANGE - LOCATED 56' FROM END BENT 1 BEARING (PAR)



Span 1 Beam 4: IMPACT DAMAGE 4/2022: 3-1/2"L GOUGE UP TO 5/8"D ON NORTH EDGE OF BOTTOM FLANGE - LOCATED 56' FROM END BENT 1 BEARING (PAR)



Span 1 Beam 4: IMPACT DAMAGE 4/2022: 3-1/2"L GOUGE UP TO 5/8"D ON NORTH EDGE OF BOTTOM FLANGE - LOCATED 56' FROM END BENT 1 BEARING (PAR)



Span 1 Beam 5: IMPACT DAMAGE 4/2022: 2"W x 3"L x 3/8"D GOUGE ON NORTH EDGE OF BOTTOM FLANGE AT 56' FROM END BENT 1 BEARING (PAR)



Span 1 Beam 5: IMPACT DAMAGE 4/2022: 2"W x 3"L x 3/8"D GOUGE ON NORTH EDGE OF BOTTOM FLANGE AT 56' FROM END BENT 1 BEARING (PAR)



Span 1 Beam 5: IMPACT DAMAGE 4/2022: (3) GOUGES UP TO 2"L x 1/2"W x 1/16"D ON BOTTOM SIDE OF BOTTOM FLANGE - LOCATED 55'-6" FROM END BENT 1 BEARING



Span 1 Beam 5: IMPACT DAMAGE 4/2022: (3) GOUGES UP TO 2"L x 1/2"W x 1/16"D ON BOTTOM SIDE OF BOTTOM FLANGE - LOCATED 55'-6" FROM END BENT 1 BEARING



Span 1 Beam 5: IMPACT DAMAGE 4/2022: 13"L x 1/2"W x 1/4"D INDENTION ON NORTH EDGE OF BOTTOM FLANGE AT 57' FROM END BENT 1 BEARING



Span 1 Beam 5: IMPACT DAMAGE 4/2022: 13"L x 1/2"W x 1/4"D INDENTION ON NORTH EDGE OF BOTTOM FLANGE AT 57' FROM END BENT 1 BEARING



Span 1 Bay 1: IMPACT DAMAGE 4/2022 - INT. DIAPHRAGM 3, BEAM 1 CONNECTION, BOTTOM WELD - 3"L CRACK AT TOE OF WELD (PAR)



ALT VIEW - Span 1 Bay 1: IMPACT DAMAGE 4/2022 - INT. DIAPHRAGM 3, BEAM 1 CONNECTION, BOTTOM WELD - 3"L CRACK AT TOE OF WELD (PAR)



Span 1 Bay 1: IMPACT DAMAGE 4/2022 - INT. DIAPHRAGM 3, BEAM 1 CONNECTION BRACKET - BOTTOM 10" BENT 3-1/2" TO THE WEST (PAR)



Span 1 Beam 1: IMPACT DAMAGE 4/2022 - 24" DIAMETER SECTION OF WEB DEFLECTED 1-1/4" TO THE NORTH AT INT. DIAPHRAGM 3 CONNECTION (PAR)



Span 1 Beam 1: IMPACT DAMAGE 4/2022 - 24" DIAMETER SECTION OF WEB DEFLECTED 1-1/4" TO THE NORTH AT INT. DIAPHRAGM 3 CONNECTION (PAR)



SPAN 1 BEAM 5 - IMPACT DAMAGE OVERVIEW



SPAN 1 BEAM 4 - IMPACT DAMAGE OVERVIEW



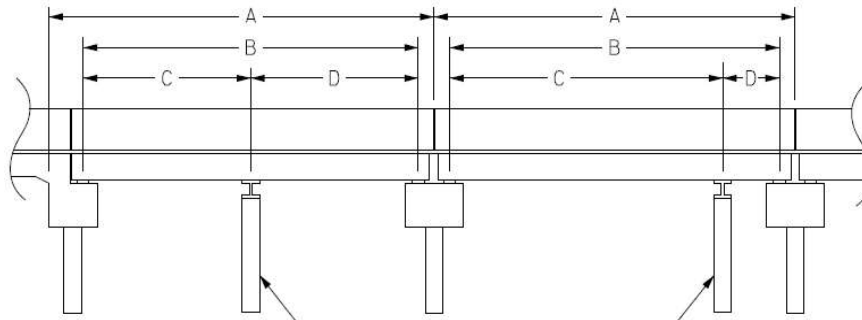
SPAN 1 BEAM 1 - IMPACT DAMAGE OVERVIEW

Structure Data Worksheet

Span Profile

County: **CHATHAM**

Structure Number: **180022**



A: SPAN LENGTH
 B: BEARING TO BEARING
 C: DISTANCE FROM NEAR BEARING
 D: DISTANCE TO FAR BEARING

Span Number	Span Length	Bearing to Bearing	Crutch/ Helper Bent	Distance to Near Bearing	Distance to Far Bearing
1	110.000	108.500			
2	105.000	103.500			

Structure Number: 180022

Span: 1

Route Name: US421S



SPAN 1, LOOKING SOUTH AT US421SB

Route Number: 21004210		Route Name: US421S			Reference Feature: H	
Minimum Vertical Clearance 14.917 feet		Maximum Minimum Vertical Clearance 15.000 feet				
Total Horizontal Clearance 63.000 feet		Lateral Clearances: Left: 22.000 feet Right: 10.000 feet				
<input checked="" type="checkbox"/> Base Highway Network		LRS Inventory Route, Sub Route Number 20421				
Milepost: 157.800	Number of Lanes: 2	ADT: 5500	Year of ADT: 2015	Percentage of Trucks: 14		
<input checked="" type="checkbox"/> National Highway System			<input type="checkbox"/> STRAHNET Highway Designator			
Functional Classification 2			Direction of Traffic: 1 1 - way traffic			

Structure Number: 180022

Span: 2

Route Name: US421N



SPAN 2, LOOKING NORTH AT US421NB

Route Number: 21004210		Route Name: US421N		Reference Feature: H	
Minimum Vertical Clearance 15.500 feet		Maximum Minimum Vertical Clearance 15.580 feet			
Total Horizontal Clearance 50.583 feet		Lateral Clearances: Left: 16.583 feet Right 10.000 feet			
<input checked="" type="checkbox"/> Base Highway Network		LRS Inventory Route, Sub Route Number 20421			
Milepost: 157.800	Number of Lanes: 2	ADT: 5500	Year of ADT: 2015	Percentage of Trucks: 14	
<input checked="" type="checkbox"/> National Highway System			<input type="checkbox"/> STRAHNET Highway Designator		
Functional Classification 2		Direction of Traffic: 1 1 - way traffic			



LOOKING SOUTH THRU SPAN 1